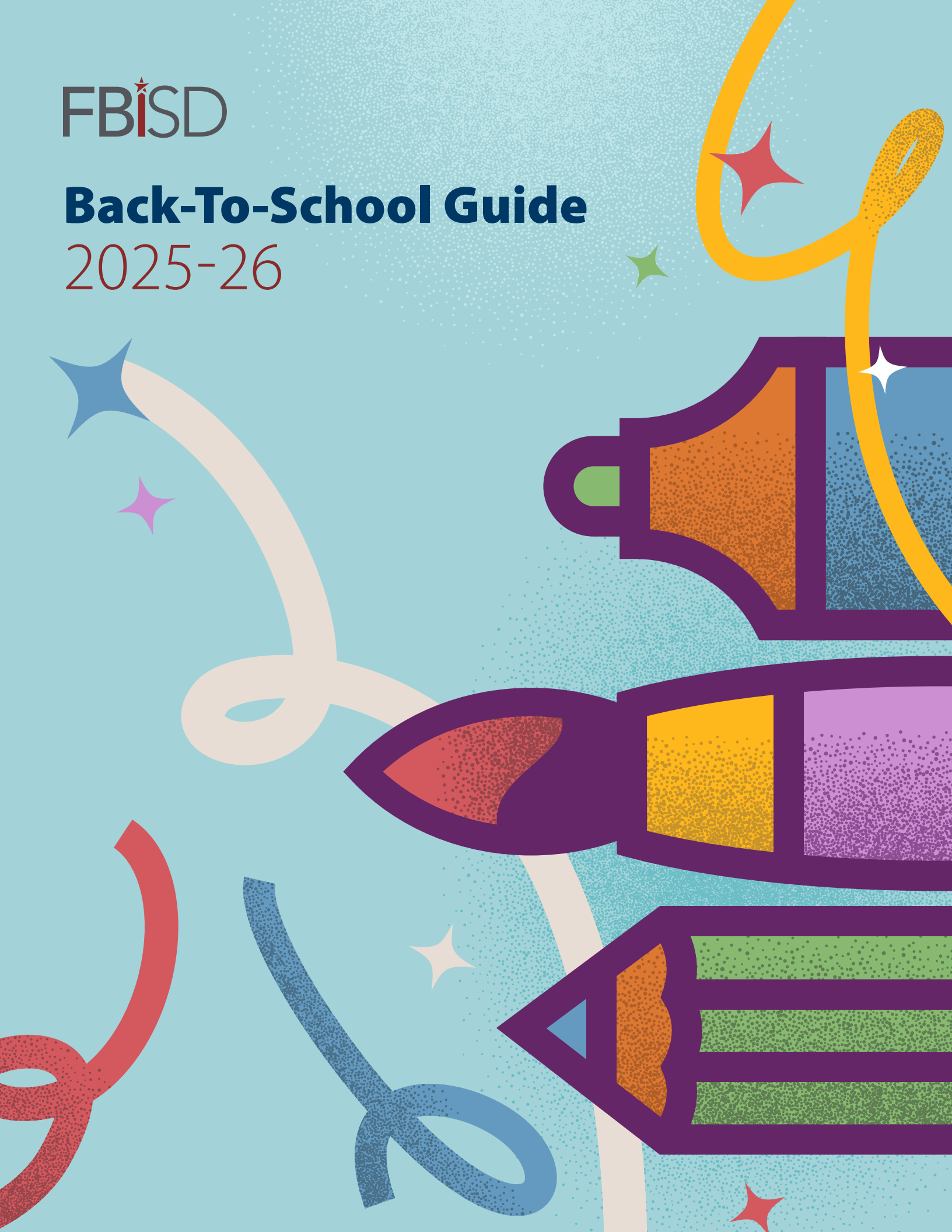


FBiSD

# Back-To-School Guide

## 2025-26





## Level Up with Superintendent **Dr. Marc Smith**

Dear Fort Bend ISD Community,

Last year, I encouraged our students and staff to “Lead the PAC,” with P standing for Professionalism, A for Accountability, and C for Communication.

These values are the foundation of the culture we’re building in Fort Bend ISD. They are core skills that help us succeed at every level.

This year, I’m challenging all of us to take the next step: it’s time to Level Up!

We don’t advance to the next level by staying in our comfort zone. Leveling up means raising the bar in everything we do.

As we enter this new school year, I challenge each of you to tap into your full potential, strive for growth, embrace challenges, and execute with excellence.

Sincerely,

**Dr. Marc Smith**  
Fort Bend ISD Superintendent



**Kristin K. Tassin**  
President  
Position 6



**Angie Hanan**  
Vice President  
Position 1



**Dr. Shirley  
Rose-Gilliam**  
Secretary  
Position 4



**Adam Schoof**  
Member  
Position 2



**Afshi Charania**  
Member  
Position 3



**Angie Wierzbicki**  
Member  
Position 7



# Register Today!



## Your Student's Future Starts Here

FBISD offers innovative programs to meet the diverse needs of students at every level.

**High School:** Students can earn college credit and industry certifications through Early College High School, P-TECH and six career-focused academies. Juniors and seniors can attend the James Reese Career and Technical Center, featuring student-run businesses open to the public.

**Middle School:** Students explore careers through 14 CTE programs. FBISD also offers a Gifted and Talented Academy for advanced learners.

**Elementary:** A full-day Pre-K program and two Early Literacy Centers help young learners achieve grade-level reading by first grade.

Across all levels, services such as Gifted and Talented, Special Education and Multilingual programs ensure equitable access to high-quality learning.



# ENROLLING A **NEW STUDENT**

Students who are 5 years old but under 21 on September 1 of the school year in which they seek admission, are eligible to attend FBISD schools.

## **Who Can Enroll a Student:**

Only a parent, guardian or court-appointed legal custodian may enroll a child. A valid Texas Driver License or ID with an FBISD zoned address is required.

## **What You'll Need:**

- Birth certificate
- Immunization records
- Proof of residence (utility bill, lease, deed, etc.)
- Parent/guardian photo ID with FBISD zoned address
- Report card or transcript
- Social Security card or state-assigned student ID

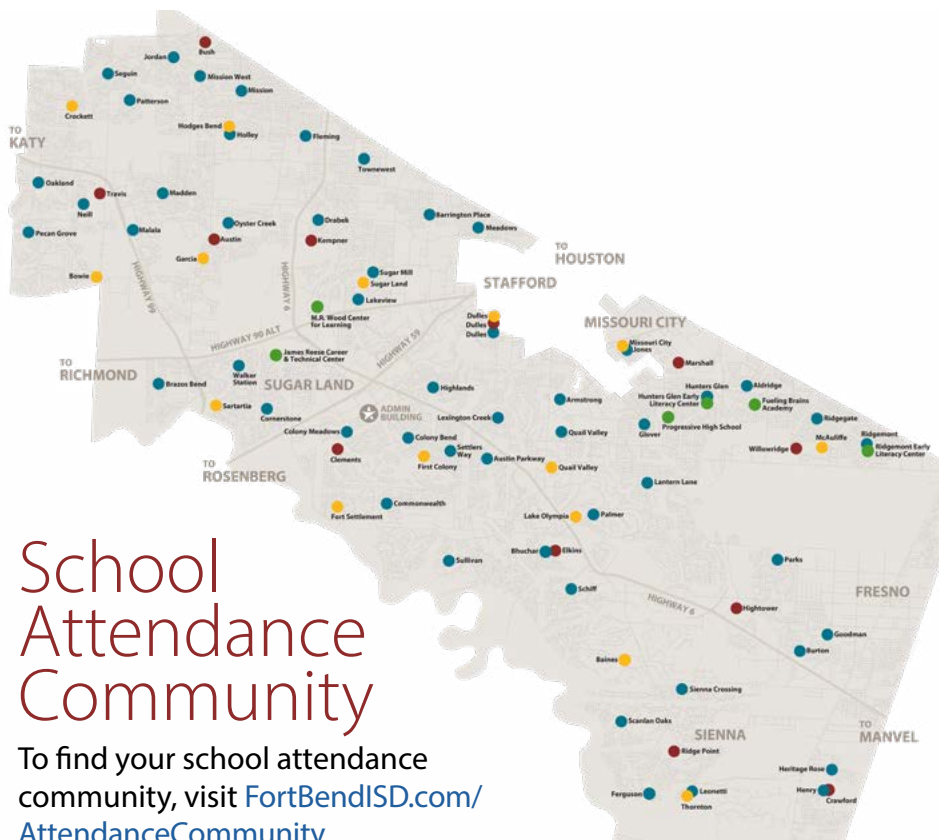


To begin the registration process and learn more about age and program requirements, visit **[FortBendISD.com/NewStudent](https://www.fortbendisd.com/NewStudent)**.



Registration must be completed at the school in which the child's residence address is zoned within FBISD; therefore, parents must contact their child's zoned school for additional enrollment information.





## School Attendance Community

To find your school attendance community, visit [FortBendISD.com/AttendanceCommunity](https://FortBendISD.com/AttendanceCommunity)

# School Hours

MONDAY – FRIDAY

## Elementary School

8:05 a.m. – 3:25 p.m.



## Middle School

8:50 a.m. – 4:10 p.m.



## High School

7:30 a.m. – 2:50 p.m.



## Parents Can Track Their Students on the Bus

FBISD uses the Stopfinder app to share bus transportation schedules and other important information with parents.

Students scan ID badges when boarding and exiting the bus track and parents can set up alerts to verify their child's bus location and confirm they are on the bus.

Parents or guardians will receive an invitation to the Stopfinder app when route information becomes available on the **Bus Route Locator** in early August.

[FortBendISD.com/Transportation](https://FortBendISD.com/Transportation)

**NEW**

# PRE-K3 HEAD START PROGRAM!

FBISD



## Our Youngest Learners

A strong, early start is a good indicator of a student's educational success. FBISD offers diverse options to support the needs of young learners.

New this year! FBISD, in collaboration with BakerRipley, will offer a full-day Head Start program in 11 classrooms for qualifying three-year-olds (Pre-K3).

The Prekindergarten program for four-year-olds (Pre-K4) will expand this year and also includes two Early Literacy Centers.

Young learners who require language support can attend bilingual Pre-K programs.

Special programs are also available for students who require special education services through the

Early Childhood Special Education program and the Early Intervention Academy.

Learn more about the programs, qualification criteria and locations at [FortBendISD.com/Prek](https://FortBendISD.com/Prek).



**Pre-K3  
Webpage**

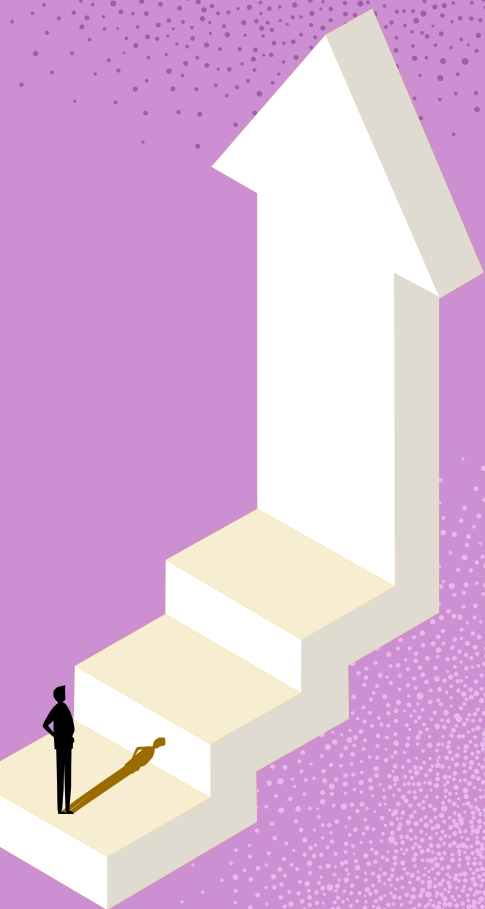
*Sitio web de Pre-K3*





# Set for Success

From academic support to family resources, these highlights are just a glimpse of the many ways FBISD is here to support your student's success all year long.



## Multilingual Programs

FBISD supports families with students where English is not the first language at home. We offer tailored programs to elementary and secondary students, in addition to providing world language instruction in seven languages.

[FortBendISD.com/MultilingualPrograms](https://FortBendISD.com/MultilingualPrograms)

## Gifted and Talented (GT)

FBISD works to identify its gifted learners and support their unique and diverse learning styles.

Gifted and Talented services are educational interventions for students who perform at or show the potential for performing at a remarkably high level of accomplishment. GT programs are offered to students in kindergarten through 12th grade.

Students can be referred for evaluation. All FBISD second grade students are also screened.

Unique opportunities including high school mentoring programs and a middle school academy which supports students and their families in creative, self-directed learning.

[FortBendISD.com/GT](https://FortBendISD.com/GT)

## Special Education Services - Child Find

FBISD is responsible for identifying, locating and evaluating any child (ages birth-21) with known or suspected disabilities who reside within the school district's boundaries to determine whether a need for special education and related services exists. This mandate also applies to any child who is currently attending a private school or is being homeschooled. Information regarding referrals and evaluations for special education services can be found by visiting [FortBendISD.com/ChildFind](https://FortBendISD.com/ChildFind) or calling 281-634-1351.





## Meal Services

FBISD serves healthy breakfast and lunch meals to students daily.

Parents can view menus, make payments and more at [Schoolcafe.com/fbisd](http://Schoolcafe.com/fbisd).

**All families are encouraged to complete the Free & Reduced-Price Meal Application online.**

**Families must complete a new form each year.**

Families who qualify receive free and/or reduced-price meals and additional reduced fees on extended learning programs, CTE courses, exams, athletic programs and more.

**5 REASONS FOR COMPLETING THE FREE & REDUCED LUNCH APPLICATION**  
ONE FORM. BIG IMPACT.  
FBISD

- 1** Increased funding to support student education and services
- 2** May result in free or discounted fees to participate in athletics
- 3** Financing of dual credit courses for students who are eligible for Free or Reduced Lunch
- 4** May qualify you for reduced registration fees for AP, SAT, and/or ACT tests
- 5** May qualify you for discounted rates on internet services

Students who attend Community Eligibility Program (CEP) campuses will receive free meals but should still fill out the form to

qualify for additional benefits.

[FortBendISD.com/ChildNutrition](http://FortBendISD.com/ChildNutrition)

## FBISD ATTENDANCE BOUNDARY PLANNING

FBISD officially launched the boundary planning process for the 2025–26 school year. This important work helps prepare for the opening of new campuses and ensures balanced enrollment across the district.

This long-range boundary planning process supports the efficient use of school buildings and includes

evaluating enrollment trends, facility usage, future growth, and areas of stabilized growth or underutilization, and may involve strategies including possible building closures, attendance boundary changes, enrollment caps and program relocations.

FBISD is committed to transparency and collaboration,

and will engage staff, families and community members throughout the planning process.

To learn more about the timeline, guiding principles and ways to provide input, visit the Boundary Planning and Enrollment Management webpage at [FortBendISD.com/Boundaries](http://FortBendISD.com/Boundaries).





## FBISD continues EquippED

### 1:1 Program to Provide Individual Laptops to Secondary Students

Fort Bend ISD is excited to continue its EquippED 1:1 Laptop Program into the 2025–26 school year. This program provides each FBISD student in grades 6 through 12 with their own designated district laptop for educational use at school and at home, thanks to a \$17.6 million federal grant and \$12.4 million from the 2023 Bond, Proposition B.

All middle and high school students are required to participate in the program and must bring their district-issued laptop to school each day fully charged. At the conclusion of the

school year, enrolled students will retain their device over the summer to support continued educational engagement.

Laptops are provided at no cost for student use. However, parents and guardians are financially responsible for any costs resulting from damage, loss or theft. Optional insurance is available for purchase to help cover these potential expenses.

The 1:1 laptops ensure all students have equal access to essential digital tools, including Schoology, online textbooks,

assignments, and assessments. In addition, a district-issued device is required by the State of Texas for participation in STAAR and TELPAS testing.

Elementary students will not receive individual 1:1 devices. Instead, they will continue using the Classroom Toolkit, carts equipped with laptops or iPads for each classroom. These carts will be upgraded to include 66% more laptops, and all devices will be refreshed with the latest updates.

[FortBendISD.com/Equipped](https://FortBendISD.com/Equipped)

## Have a Question or Concern? Let's Connect!

Use Let's Connect to quickly reach the right FBISD department. Not sure where to start? Choose General Inquiries—we'll direct it for you. You can also report bullying, anonymously if needed.

Visit [FortBendISD.com/LetsConnect](https://FortBendISD.com/LetsConnect) or find it on any page of our website.

## Skyward Gets a Facelift

Skyward has been upgraded to the latest platform—Skyward Qmlativ (Q) Family Access and will be available for the new school year.

The upgrade brings enhanced security and improved reporting tools for the district, and a more user-friendly experience for parents.

Parents and students who use the Skyward mobile app will need to reinstall it to connect with the new system.

The district will send further communication closer to the beginning of school.

For more information, including video tours of the new Family Access layout, visit:

[FortBendISD.com/SkywardQ](https://FortBendISD.com/SkywardQ)



**COMING  
SOON...**



# A SAFE ZONE

## Before and After School

At FBISD, the safety of our students is a top priority, both inside and outside the school premises. To ensure the safety of our students during drop-off and pick-up times, please follow these guidelines from the Texas Department of Transportation:

- Be aware that traffic patterns around school zones may have changed since the last school year.
- Stay alert and put your cell phone away. Using a handheld electronic device while driving in an active school zone is against the law.
- Always obey school zone speed limit signs. Remember, traffic fines increase in school zones.
- Drop off and pick up your children in your school's designated areas - not the middle of the street.
- Keep an eye on children gathered at bus stops.
- Watch for children who might dart across the street or between vehicles.

### ***Before You Roll to School, Know the Rules!***

Students who bike, skate or ride scooters to school - keep these safety tips in mind:

- **Wear a helmet.**
- **Stay alert! No texting or wearing earbuds while riding.**
- **Follow traffic rules and stop at all intersections.**
- **Use sidewalks and crosswalks when available.**
- **Lock your ride securely on designated bike racks.**
- **Watch for cars and buses, especially near school entrances.**

Let's work together to make this school year safe and successful for everyone.



# Athletic Physicals

for the 2025-26 School Year

To be eligible to participate in athletics and some fine arts programs, students must have a physical with a doctor's stamp dated after April 1, 2025 and complete their electronic forms in Rank One.

Physicals will be offered for \$20 at the following times and locations. No cash will be accepted.

## Immunizations

Each year, the Department of State Health Services reviews immunization requirements for children who attend school. View an updated list of the [Department of State Health Services vaccine requirements](#). Proof of vaccinations should be provided to a child's campus before beginning the school year.

**July 26, 2025**  
**9 – 11 a.m.**

**Houston Methodist  
Orthopedics & Sports Medicine**  
16811 Southwest Freeway  
Sugar Land, Texas 77479

**Purchase Tickets on Go Fan:**  
[https://gofan.co/event/  
3631993?schoolId=TX27288](https://gofan.co/event/3631993?schoolId=TX27288)



**August 13, 2025**  
**5 – 7 p.m.**

**Hopson Field House 3**  
335 Hurricane Lane  
Missouri City, Texas 77459

**Purchase Tickets on Go Fan:**  
[https://gofan.co/event/  
3738710?schoolId=TX27288](https://gofan.co/event/3738710?schoolId=TX27288)



## Don't Forget

Wear light, comfortable clothing. Bring glasses or wear contacts.  
Bring school physical form with medical history completed and signed physical consent form.

# School Supplies

## Middle School

- ☐ 1 package #2 pencils (replenish as needed)
- ☐ 1 package pens (blue or black)
- ☐ 4 packages notebook paper (should be replenished throughout the year)
- ☐ 2 large glue sticks
- ☐ 1 pair school scissors
- ☐ 1 package multi-colored highlighters
- ☐ 1 pencil sharpener with cover
- ☐ 1 12" ruler marked with inches and centimeters
- ☐ 1 pencil pouch
- ☐ 1 package colored pencils
- ☐ 1 package quarter inch graph paper
- ☐ 1 box facial tissue

**Parents of high school students are asked to check with their child's campus directly for school supplies.**

Students are generally given requirements in their classes on the first day of school.

## Elementary

### PRE-KINDERGARTEN

- ☐ 6 glue sticks
- ☐ 2 boxes of #2 standard pencils
- ☐ 2 pink erasers
- ☐ 1 plastic pencil box
- ☐ 2 boxes of crayons (24)
- ☐ 1 box of markers (standard/washable)
- ☐ 1 pair of blunt/safety scissors
- ☐ 1 package of construction paper
- ☐ 2 pocket folders with brads
- ☐ 2 boxes of facial tissue
- ☐ 1 bottle of hand sanitizer
- ☐ 1 package of alcohol-based disinfectant wipes
- ☐ 1 primary journal, 8x10 (white primary paper, red baseline, wide-ruled, and drawing box)
- ☐ 1 bottle of glue
- ☐ 1 pack of non-toxic compound playdough with eight colors
- ☐ 1 nap mat or blanket

### KINDERGARTEN

- ☐ 6 glue sticks
- ☐ 2 boxes of #2 standard pencils
- ☐ 2 pink erasers
- ☐ 1 plastic pencil box
- ☐ 1 box of crayons (24)
- ☐ 1 box of markers (standard/washable)
- ☐ 1 pair of safety scissors
- ☐ 1 package of construction paper
- ☐ 3 pocket folders with brads
- ☐ 2 boxes of facial tissue
- ☐ 1 bottle of hand sanitizer
- ☐ 1 package of alcohol-based disinfectant wipes
- ☐ 1 package standard sticky notes
- ☐ 4 notebooks, 8x10 (white primary paper, red baseline, wide-ruled and drawing box)
- ☐ 1 composition notebook, primary style
- ☐ 1 box black dry-erase markers

### FIRST GRADE

- ☐ 6 glue sticks
- ☐ 2 boxes of #2 standard pencils
- ☐ 2 pink erasers
- ☐ 1 plastic pencil box
- ☐ 1 box of crayons (24)
- ☐ 1 box of markers (standard/washable)
- ☐ 1 pair of safety scissors
- ☐ 1 package of construction paper
- ☐ 4 pocket folders with brads
- ☐ 2 boxes of facial tissue
- ☐ 1 bottle of hand sanitizer
- ☐ 1 package of alcohol-based disinfectant wipes
- ☐ 1 package standard sticky notes
- ☐ 4 notebooks, 8x10 (white primary paper, red baseline, wide-ruled)
- ☐ 4 hard cover composition notebooks, primary style
- ☐ 1 box of map coloring pencils
- ☐ 2 packages of notebook paper, wide-ruled

### GRADES 2-5

- ☐ 6 glue sticks
- ☐ 2 boxes of #2 standard pencils
- ☐ 2 pink erasers
- ☐ 1 pencil bag
- ☐ 1 box crayons (24)
- ☐ 1 box markers (standard/washable)
- ☐ 1 pair child scissors
- ☐ 1 package construction paper
- ☐ 6 pocket folders with brads
- ☐ 1 package standard sticky notes
- ☐ 1 12" ruler marked with inches and centimeters
- ☐ 1 box of map coloring pencils
- ☐ 2 packs of notebook paper, wide-ruled (replenished as needed)
- ☐ 4 spiral or composition notebooks
- ☐ 4 hard cover composition notebooks
- ☐ 1 package black dry-erase markers
- ☐ 2 boxes of facial tissue
- ☐ 1 bottle of hand sanitizer
- ☐ 1 package of alcohol-based disinfectant wipes
- ☐ 1 package of 1/2" graph paper (4th-5th Grade ONLY)







## Attendance *Matters*

*TEXAS requires all students be present each day at school at "snapshot" — this is 10 a.m. for elementary and high school students, and 10:15 a.m. for middle school students.*

## Extended Learning

### Offers Enriching Programs

The Extended Learning Department operates various programs to enhance your child's educational journey and foster their growth as critical thinkers and lifelong learners.

**Extended Day Program (EDP):** Our before and after school program is available at FBISD elementary campuses. This program offers a safe and nurturing environment where students can engage in enriching activities, complete homework and interact with their peers.

**Club Excel:** Designed specifically for FBISD middle school campuses, it provides students with opportunities to explore their interests and develop new skills. From arts and crafts to sports and STEM projects, Club Excel offers a well-rounded experience for middle school students.

**Little Learners Program:** For children enrolled in Pre-K, this program is designed to provide our youngest learners with a supportive and stimulating environment that encourages their cognitive, social and emotional development.

**Success Zone:** An exciting after-school enrichment program for elementary students that offers classes from STEM, cooking, sports, fitness, art, music, dance and more. We collaborate with professionals throughout the community to bring students the perfect mix of fun learning, imaginary curriculum and high-energy activities.

For more information, including the registration process and class schedules, go to [FortBendISD.com/ExtendedLearning](https://www.fortbendisd.com/ExtendedLearning) or contact the department directly at 281-634-4220.

# Community Partners Make an Impact

FBISD values community partners that support our schools and ultimately student achievement. Our partners range from corporate entities, local businesses, community-based organizations and health institutions.

**There are many ways community members can contribute to our students' success.**

1. Participate in mentoring, after-school activities or read with a child.
2. Provide impactful programs and/or learning materials that reflect real world applications of classroom subjects.
3. Donate
  - Provide non-monetary, in-kind support for programs/events.
  - Provide incentives for students and/or teachers.
  - Donate funds to purchase awards for student achievement.
  - Underwrite or assist with funding for campus and/or district-wide activities, events or programs.
4. Serve as an event judge or Career Day speaker.
5. Serve on a committee.
  - Instructional Calendar
  - Attendance Boundary Planning
  - Special Education
  - Student Discipline
  - Information Technology
  - School Safety and Security
6. Focus Groups
7. Volunteer at Shared Dreams.

[FortBendISD.com/  
CollaborativeCommunities](https://FortBendISD.com/CollaborativeCommunities)  
281-634-1109

## Interested in becoming a district partner?

Fill out the [District Partnership Form](#) - it's quick and easy. A member of the Collaborative Communities team will be in touch regarding your interest. Partner with our district at [FortBendISD.com/Partner](https://FortBendISD.com/Partner).



## Serving Students for More than 35 Years

Shared Dreams provides basic needs for students in need so they can focus on what's important... learning!

Thanks to community support and philanthropic donations, students in need are provided with clothing, shoes, toiletries, food and school supplies.

Shared Dreams primarily relies on monetary and in-kind donations from businesses, community service organizations, faith groups and others. But, they also take donations of clothing, non-perishable food, school supplies and toiletries.

To learn more, contact 281-634-2916 or visit **[FortBendISD.com/  
SharedDreams](https://FortBendISD.com/SharedDreams)**.





# Ways to Stay Connected

With Fort Bend ISD

## Social Media:

**X** (formerly Twitter)  
[@FortBendISD](#)

**X - Superintendent**  
Dr.Smith  
[@FortBendISDSupt](#)

**Facebook**  
[Fort Bend ISD](#)

**Instagram**  
[@FortBend.ISD](#)

**Instagram - Superintendent**  
[@FortBendISDSupt](#)

**YouTube**  
[@FortBendISDXTX](#)

**LinkedIn**  
[Fort Bend ISD](#)

**Skyward Q** allows you to stay connected with your child's academic progress, attendance records, grades and more.

**Blackboard** delivers district-wide announcements, emergency alerts and important updates to parents and staff.

## FBISD Magazine

highlights the outstanding work being done in our schools and the talents and accomplishments of our students, staff and community members.

[FortBendISD.com/Magazine](#)

## SuperIntentional Podcast

is your go-to for meaningful conversations with special guests on topics relevant to every FBISD family and community member.

[FortBendISD.com/Superintentional](#)

**Express Newsletter** delivers timely updates directly to your email inbox, keeping you in the loop with the latest happenings in FBISD.

**Let's Connect** provides a direct way to communicate with specific departments within the district to ask questions, provide feedback or seek support.

[FortBendISD.com/LetsConnect](#)

**FortBendISD.com** contains a wealth of information, including district news, calendars, school directories, curriculum details, policies and contact information for various departments.

*NOTE: Our domain will soon change to .gov!*

**Schoology** is an online learning platform used by students and teachers. While parents have view-only access, it provides a window into your child's coursework, assignments and class updates.

## Stay Connected, Stay Informed: Don't Opt Out!

Fort Bend ISD is committed to keeping our families informed and connected throughout the school year. Beginning August 2025, all primary FBISD parents and guardians on file in the new Skyward Q will be automatically opted in to receive important district communications, including emergency text messages. By staying opted in, you ensure you never miss critical updates about school closures, safety alerts, or important district news. This streamlined approach helps us reach you quickly and reliably when it matters most. We strongly encourage families not to opt out so you can stay informed, prepared, and engaged in your child's education. Together, we can keep our community safe and connected!



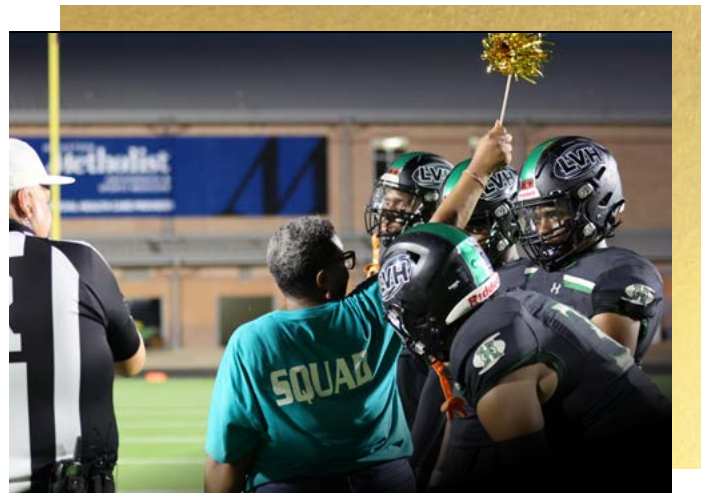
**[FortBendISD.com/GoldCard](https://FortBendISD.com/GoldCard)**

## **Gold Card Club Benefits Include Free Admission To:**



### **FBISD cultural events**

including student and district plays, musicals and concerts held during the school year at all FBISD schools and facilities. *(Reservations may be necessary when sell-out performances are anticipated)*



### **FBISD regular season athletic events**

held at district schools and facilities *(including gymnasiums, football and baseball fields, etc.)* and general admission seating at district stadiums. *(Cards will not be valid for activities beyond regular District schedules or out-of-District or "away" games and events)*

### **Eligible Gold Card Holders Must Be:**

- A resident of Fort Bend ISD who is 62 years of age or older. (Texas Driver License)
- A military veteran and/or active military personnel who resides in Fort Bend ISD (Military ID)

### **To Apply For Membership In FBISD Gold Card Club:**

Once completed, bring the application to the FBISD Administration Building receptionist (located at 16431 Lexington Blvd., Sugar Land, TX, 77479), along with a photo ID (Texas Drivers' License or Military ID) and proof of residence (deed, lease agreement or water, gas or electric utility bill in your name).



## August

July 31st - Aug 1st ..... District Professional Learning Days/  
No Students  
4th ..... Teacher Work Day/No Students  
5th-8th ..... Professional Learning Days/No Students  
11th ..... Teacher Planning Day/No Students  
12th ..... First Day of Classes 1st Semester

## September

1st ..... Student/Teacher Holiday/Labor Day  
25th ..... Early Release-Elementary  
26th ..... Professional Learning Day/No Students

## October

13th-17th ..... Student/Teacher Holiday  
20th ..... Teacher Planning Day/No Students

## November

24th-28th ..... Student/Teacher Holiday

## December

18th ..... Early Release – MS/HS  
19th ..... Early Release/All Students  
22nd-31st ..... Student/Teacher Holiday/Winter Break

## January

1st-2nd ..... Student/Teacher Holiday/New Year's Day  
5th ..... Teacher Work Day/No Students  
6th ..... Professional Learning Day/No Students  
7th ..... Teacher Planning Day/No Students  
8th ..... First Day of Classes 2nd Semester  
19th ..... Student/Teacher Holiday/Martin Luther King Jr. Day

## February

12th ..... Early Release-Elementary  
13th ..... Professional Learning Day/No Students  
16th ..... Student/Teacher Holiday/  
Inclement Weather Make-Up Day

## March

6th ..... Teacher Planning Day/No Students  
16th-20th ..... Student/Teacher Holiday

## April

3rd ..... Student/Teacher Holiday

## May

25th ..... Student/Teacher Holiday/Memorial Day  
27th ..... Early Release MS/HS  
28th ..... Early Release – All Students/Last Day for Students  
29th ..... Teacher Work Day/No Students/  
Inclement Weather Make-Up Day

## June

19th ..... Student/Teacher Holiday/Juneteenth

## July

6th-10th ..... District Office and Campuses Closed

## KEY

<span style="background-color: yellow;"> </span> Teacher Work Day	[ ] Beginning/End of Nine Weeks
<span style="background-color: orange;"> </span> Professional Learning	{ } Exams
<span style="background-color: red;"> </span> Teacher Planning	<span style="background-color: pink;"> </span> Early Release ES
<span style="background-color: green;"> </span> First Day of Semester	<span style="background-color: brown;"> </span> Early Release HS/MS
<span style="background-color: brown;"> </span> District Professional Learning Day	<span style="background-color: blue;"> </span> Early Release HS/MS/ES
<span style="background-color: purple;"> </span> Holiday	<span style="border: 1px dashed black;"> </span> Inclement Weather Make-up Day

This Calendar Reflects the Following	ES	MS	HS
Total Days of Instruction	171	171	171
Total Teacher Contract Days	187	187	187
Operational Minutes per Full Day	440	440	440
Operational Minutes per Early Release Days	240	270	245
Total Operational Minutes Pre-Waiver	74,440	74,560	74,460
Waiver Minutes for Professional Learning	2,100	2,100	2,100
Total Operational Min. w/ Approved Waivers	76,540	76,660	76,560
Bank of Operational Minutes	940	1,060	960

HB 2442 requires a minimum of 75,600 operational minutes with any applicable waivers and at least a minimum bank of 840 operational minutes. The bank of operational minutes can be used in the event of bad weather and other issues of health and safety. FBISD reserves the right to revise the calendar, pending Board approval, to meet the minimum required operational minutes each year.

S	M	T	W	T	F	S
August 2025						
27	28	29	30	31	1	2
3	4	5	6	7	8	9
10	11	12	13	14	15	16
17	18	19	20	21	22	23
24	25	26	27	28	29	30
31						

September 2025						
	1	2	3	4	5	6
7	8	9	10	11	12	13
14	15	16	17	18	19	20
21	22	23	24	25	26	27
28	29	30				

October 2025						
			1	2	3	4
5	6	7	8	9	[10]	11
12	13	14	15	16	17	18
19	20	[21]	22	23	24	25
26	27	28	29	30	31	

November 2025						
						1
2	3	4	5	6	7	8
9	10	11	12	13	14	15
16	17	18	19	20	21	22
23	24	25	26	27	28	29
30						

December 2025						
	1	2	3	4	5	6
7	8	9	10	11	12	13
14	15	{16}	{17}	{18}	{19}	20
21	22	23	24	25	26	27
28	29	30	31			

January 2026						
				1	2	3
4	5	6	7	[8]	9	10
11	12	13	14	15	16	17
18	19	20	21	22	23	24
25	26	27	28	29	30	31

S	M	T	W	T	F	S
February 2026						
1	2	3	4	5	6	7
8	9	10	11	12	13	14
15	16	17	18	19	20	21
22	23	24	25	26	27	28

March 2026						
1	2	3	4	5	6	7
8	9	10	11	12	[13]	14
15	16	17	18	19	20	21
22	[23]	24	25	26	27	28
29	30	31				

April 2026						
			1	2	3	4
5	6	7	8	9	10	11
12	13	14	15	16	17	18
19	20	21	22	23	24	25
26	27	28	29	30		

May 2026						
					1	2
3	4	5	6	7	8	9
10	11	12	13	14	15	16
17	18	19	20	21	{22}	23
24	25	{26}	{27}	{28}	29	30
31						

June 2026						
	1	2	3	4	5	6
7	8	9	10	11	12	13
14	15	16	17	18	19	20
21	22	23	24	25	26	27
28	29	30				

July 2026						
			1	2	3	4
5	6	7	8	9	10	11
12	13	14	15	16	17	18
19	20	21	22	23	24	25
26	27	28	29	30	31	

### 1st Semester Grading Period

81 Days

1st Nine Weeks	8/12 - 10/10	42
2nd Nine Weeks	10/21 - 12/19	39

### 2nd Semester Grading Period

90 Days

3rd Nine Weeks	1/8 - 3/13	43
4th Nine Weeks	3/23 - 5/28	47

Cultural and religious observances of families in FBISD can be accessed on the [Diversity Calendar](http://www.fortbendisd.com/diversity) at [www.fortbendisd.com/diversity](http://www.fortbendisd.com/diversity).

Board Approved 1/29/2025

### Agosto

31 De Julio-1 de Ago...Días de capacitación profesional del Distrito/  
No hay clases  
4.....Día de preparación para maestros/No hay clases  
5-8.....Días de capacitación profesional/No hay clases  
11.....Día de planificación para maestros/No hay clases  
12.....Primer día de clases del 1er semestre

### Septiembre

1.....Feriado para estudiantes/maestros/Día del Trabajo  
25.....Salida temprano para Escuelas Primarias  
26.....Día de capacitación profesional/No hay clases

### Octubre

13-17.....Feriado para estudiantes/maestros  
20.....Día de planificación para maestros/No hay clases

### Noviembre

24-28.....Feriado para estudiantes/maestros

### Diciembre

18.....Salida temprano para Escuelas Intermedias (6-8)/  
Escuelas Secundarias (9-12)  
19.....Salida temprano para todos los estudiantes  
22-31.....Feriado para estudiantes/maestros/  
Receso de Invierno

### Enero

1-2.....Feriado para estudiantes/maestros/Año Nuevo  
5.....Día de capacitación profesional/No hay clases  
6.....Día de planificación para maestros/No hay clases  
7.....Primer día de clases del 2º semestre  
19.....Feriado para estudiantes /  
Día de Martin Luther King Jr.

### Febrero

12.....Salida temprano para Escuelas Primarias  
13.....Día de capacitación profesional/No hay clases  
16.....Feriado para estudiantes/maestros/  
Día de recuperación por mal tiempo

### Marzo

6.....Día de planificación para maestros/No hay clases  
16-20.....Feriado para estudiantes/maestros

### Abril

3.....Feriado para estudiantes/maestros

### Mayo

25.....Feriado para estudiantes/maestros/  
Día de los Caídos  
27.....Salida temprano para Escuelas Intermedias (6-8)/  
Escuelas Secundarias (9-12)  
28.....Salida temprano para todos los estudiantes /  
Ultimo día para los estudiantes  
29.....Día de preparación para maestros/No hay clases/  
Día de recuperación por mal tiempo

### Junio

19.....Feriado para estudiantes/maestros/Juneteenth

### Julio

6-10.....Oficinas del Distrito y escuelas cerradas

### KEY

<span style="background-color: yellow;">   </span> Día de preparación para maestros	<span style="border: 1px solid black;">   </span> Principio/final de nueve semanas
<span style="background-color: orange;">   </span> Día de capacitación profesional	<span style="border: 1px solid black;">   </span> Exámenes
<span style="background-color: red;">   </span> Día de planificación para maestros	<span style="background-color: pink;">   </span> Salida temprano para Escuelas Primarias
<span style="background-color: green;">   </span> Primer día de clases del semestre	<span style="background-color: lightblue;">   </span> Salida temprano para Escuelas Intermedias (6-8)/ Escuelas Secundarias (9-12)
<span style="background-color: brown;">   </span> Día de capacitación profesional del Distrito	<span style="background-color: lightblue;">   </span> Salida temprano para todos los estudiantes
<span style="background-color: purple;">   </span> Feriado para estudiantes/maestros	<span style="border: 1px dashed black;">   </span> Día de recuperación por mal tiempo

Este calendario refleja lo siguiente:	Prim.	Int.	Sec.
Total de días de clases	171	171	171
Total de días trabajo para maestros	187	187	187
Minutos de Servicio por día completo	440	440	440
Minutos de servicio en días de salida temprano	240	270	245
Minutos de servicio sin contar capacitación	74,440	74,560	74,460
Minutos autorizados para capacitación profesional	2,100	2,100	2,100
Minutos de servicio contando capacitación profesional	76,540	76,660	76,560
Reserva de minutos de servicio	940	1,060	960

La ley HB 2442 exige un mínimo de 75,600 minutos de servicio sin contar cualquier permiso vigente y una reserva mínima de 840 minutos de servicio. La reserva puede utilizarse en caso de cancelaciones por mal tiempo o en otros casos por salud y seguridad. FBISD se reserva el derecho a revisar el calendario, sujeto a aprobación del Consejo Directivo para cumplir con el mínimo de minutos de servicio.

Do	Lu	Ma	Mi	Ju	Vi	Sa
Agosto 2025						
27	28	29	30	31	1	2
3	4	5	6	7	8	9
10	11	12	13	14	15	16
17	18	19	20	21	22	23
24	25	26	27	28	29	30
31						

Septiembre 2025						
	1	2	3	4	5	6
7	8	9	10	11	12	13
14	15	16	17	18	19	20
21	22	23	24	25	26	27
28	29	30				

Octubre 2025						
			1	2	3	4
5	6	7	8	9	10	11
12	13	14	15	16	17	18
19	20	21	22	23	24	25
26	27	28	29	30	31	

Noviembre 2025						
						1
2	3	4	5	6	7	8
9	10	11	12	13	14	15
16	17	18	19	20	21	22
23	24	25	26	27	28	29
30						

Diciembre 2025						
	1	2	3	4	5	6
7	8	9	10	11	12	13
14	15	16	17	18	19	20
21	22	23	24	25	26	27
28	29	30	31			

Enero 2026						
				1	2	3
4	5	6	7	8	9	10
11	12	13	14	15	16	17
18	19	20	21	22	23	24
25	26	27	28	29	30	31

1er Semestre de Calificaciones			81 Días
1a Nueve Semanas	12/8-10/10		42
2ª Nueve Semanas	21/10-19/12		39

Do	Lu	Ma	Mi	Ju	Vi	Sa
Febrero 2026						
1	2	3	4	5	6	7
8	9	10	11	12	13	14
15	16	17	18	19	20	21
22	23	24	25	26	27	28

Marzo 2026						
1	2	3	4	5	6	7
8	9	10	11	12	13	14
15	16	17	18	19	20	21
22	23	24	25	26	27	28
29	30	31				

Abril 2026						
			1	2	3	4
5	6	7	8	9	10	11
12	13	14	15	16	17	18
19	20	21	22	23	24	25
26	27	28	29	30		

Mayo 2026						
					1	2
3	4	5	6	7	8	9
10	11	12	13	14	15	16
17	18	19	20	21	22	23
24	25	26	27	28	29	30
31						

Junio 2026						
	1	2	3	4	5	6
7	8	9	10	11	12	13
14	15	16	17	18	19	20
21	22	23	24	25	26	27
28	29	30				

Julio 2026						
			1	2	3	4
5	6	7	8	9	10	11
12	13	14	15	16	17	18
19	20	21	22	23	24	25
26	27	28	29	30	31	

2do Semestre de Calificaciones			90 Días
3a Nueve Semanas	8/1-13/3		43
4a Nueve Semanas	23/3-28/5		47

Se puede consultar las prácticas religiosas y culturales de las familias de FBISD en el [Calendario de Diversidad](#) en la página web del Distrito Escolar de Fort Bend [www.fortbendisd.com/diversity](http://www.fortbendisd.com/diversity).

Aprobado por el Consejo Directivo 29/1/2025